



# Liana Alexandra

Roumania, Bucarest

## SONATA FOR PIANO

### About the artist

Liana Alexandra Composer Born: May 27, 1947, Bucharest, Romania Married to Serban Nichifor, composer: [http://www.free-scores.com/partitions\\_gratuites\\_serbannichifor.htm](http://www.free-scores.com/partitions_gratuites_serbannichifor.htm)

Studies

1965-1971 - "Ciprian Porumbescu" University of Music, Bucharest, Composition Department. Awarded the special scholarship "George Enescu"

1974, 1978, 1980, 1984 - international courses of composition at Darmstadt, West Germany

1983 - an USIA stipendium in USA

PhD in Musicology

AT PRESENT: Master in music; Professor at the National University of Music of Bucharest, (teaching composition, orchestration and musical analyses), Member of Duo Intermedia and co-director of the NUOVA MUSICA CONSONANTE-LIVING MUSIC FOUNDATION INC.(U.S.A) Festival, with Serban Nichifor

Selected Works

Symphonic, vocal-symphonic and concert music, music for opera

Symphony I (1971)

Cantata for women's choir and... (more online)

**Qualification:** PROFESSOR DOCTOR IN COMPOSITION AND MUSICOLOGY

**Associate:** GEMA - IPI code of the artist : I-000402252-8

**Artist page :** <https://www.free-scores.com/Download-PDF-Sheet-Music-lianaalexandra.htm>

### About the piece



**Title:** SONATA FOR PIANO  
**Composer:** Alexandra, Liana  
**Copyright:** Copyright © Liana Alexandra  
**Publisher:** Alexandra, Liana  
**Instrumentation:** Piano solo  
**Style:** Contemporary

Liana Alexandra on [free-scores.com](https://www.free-scores.com)



- listen to the audio
- share your interpretation
- comment
- contact the artist

SONATA FOR PIANO  
(1993)

L'IANA ALEXANDRA

$$d \approx 66 \text{ mm}$$

energico

f

f sempre

f sempre

f

Handwritten musical score for 'The Rose Tree'. The score is written on two staves. The first staff contains the melody, and the second staff contains the accompaniment. The key signature is one sharp (F#), and the time signature is 3/4. The melody begins with a whole note G4, followed by a half note A4, and then a quarter note B4. The accompaniment consists of a steady eighth-note pattern in the right hand and a bass line in the left hand. The piece ends with a final chord of G4-B4-D5.

Copyright © Liana Alexandra  
ISMN 000.72.96.94.37  
000.72.96.95.35

Handwritten musical notation for the first system. The piano staff (top) contains a series of chords, including a triplet of eighth notes. The bass staff (bottom) features a triplet of eighth notes and a half note. Dynamic markings include *mf* and *f*. A *G.P.* (Grave) marking with a 2" (two-second) duration is present. The system concludes with a half note and a triplet of eighth notes.

Handwritten musical notation for the second system. The piano staff (top) contains a series of chords, including a triplet of eighth notes. The bass staff (bottom) features a triplet of eighth notes and a half note. Dynamic markings include *f*, *mf*, and *ff*. The system concludes with a half note and a triplet of eighth notes.

Handwritten musical notation for the third system. The piano staff (top) contains a series of chords, including a triplet of eighth notes. The bass staff (bottom) features a triplet of eighth notes and a half note. Dynamic markings include *f* and *mf*. The system concludes with a half note and a triplet of eighth notes.

Handwritten musical notation for the fourth system. The piano staff (top) contains a series of chords, including a triplet of eighth notes. The bass staff (bottom) features a triplet of eighth notes and a half note. Dynamic markings include *mf* and *ff*. A *G.P.* (Grave) marking with a 2" (two-second) duration is present. The system concludes with a half note and a triplet of eighth notes.

Handwritten musical notation for the fifth system. The piano staff (top) contains a series of chords, including a triplet of eighth notes. The bass staff (bottom) features a triplet of eighth notes and a half note. Dynamic markings include *f* and *mf*. The system concludes with a half note and a triplet of eighth notes.

-3-

Handwritten musical notation for the first system, measures 1-3. The notation is in treble and bass staves. Measure 1 contains a 'G. P.' (Grand Pause) for 3 measures. Measures 2 and 3 contain complex chords and melodic lines with various accidentals (sharps, flats, naturals) and dynamic markings (f, mf).

Handwritten musical notation for the second system, measures 4-6. Measure 4 continues the melodic and harmonic development. Measure 5 features a triplet of eighth notes. Measure 6 contains sustained chords with dynamic markings (f, mf).

Handwritten musical notation for the third system, measures 7-9. Measure 7 contains a 'G. P.' (Grand Pause) for 4 measures. Measures 8 and 9 contain melodic fragments and chords with dynamic markings (f, mf).

Handwritten musical notation for the fourth system, measures 10-12. Measure 10 contains a melodic line with a slur and a dynamic marking (mf). Measure 11 features a complex chord structure with a 7th interval. Measure 12 contains a melodic line with a slur and a dynamic marking (p).

Copyright © Liana Alexandra  
ISMN 000.72.96.94.37  
000.72.96.95.35



-4-

Handwritten musical score for the first system, measures 1-4. The music is written on a grand staff (treble and bass clefs). Measure 1 has a treble clef with a 5-measure rest and a bass clef with a 7-measure rest. Measure 2 has a treble clef with a 3-measure rest and a bass clef with a 7-measure rest. Measure 3 has a treble clef with a 7-measure rest and a bass clef with a 7-measure rest. Measure 4 has a treble clef with a 7-measure rest and a bass clef with a 7-measure rest. The dynamic markings are *mp* (measures 1-3) and *f* (measure 4). The key signature has one sharp (F#).

Handwritten musical score for the second system, measures 5-8. The music is written on a grand staff. Measure 5 has a treble clef with a 5-measure rest and a bass clef with a 7-measure rest. Measure 6 has a treble clef with a 7-measure rest and a bass clef with a 7-measure rest. Measure 7 has a treble clef with a 7-measure rest and a bass clef with a 7-measure rest. Measure 8 has a treble clef with a 7-measure rest and a bass clef with a 7-measure rest. The dynamic markings are *f* (measures 5-6), *p* (measure 7), and *mp* (measure 8). The key signature has one sharp (F#).

Handwritten musical score for the third system, measures 9-12. The music is written on a grand staff. Measure 9 has a treble clef with a 7-measure rest and a bass clef with a 7-measure rest. Measure 10 has a treble clef with a 7-measure rest and a bass clef with a 7-measure rest. Measure 11 has a treble clef with a 7-measure rest and a bass clef with a 7-measure rest. Measure 12 has a treble clef with a 7-measure rest and a bass clef with a 7-measure rest. The dynamic markings are *mp* (measures 9-10), *f* (measure 11), and *p* (measure 12). The key signature has one sharp (F#).

Handwritten musical score for the fourth system, measures 13-16. The music is written on a grand staff. Measure 13 has a treble clef with a 7-measure rest and a bass clef with a 7-measure rest. Measure 14 has a treble clef with a 7-measure rest and a bass clef with a 7-measure rest. Measure 15 has a treble clef with a 7-measure rest and a bass clef with a 7-measure rest. Measure 16 has a treble clef with a 7-measure rest and a bass clef with a 7-measure rest. The dynamic markings are *f* (measures 13-14), *mp* (measure 15), and *f* (measure 16). The key signature has one sharp (F#).

Handwritten musical score for the first system. It consists of two staves, treble and bass. The music features complex chords and melodic lines. A '-5' is written above the staff. Dynamics include *f* (forte) and *mp* (mezzo-piano).

Handwritten musical score for the second system. It continues the composition with various musical notations and dynamics. Dynamics include *mp* (mezzo-piano), *f* (forte), and *mf* (mezzo-forte).

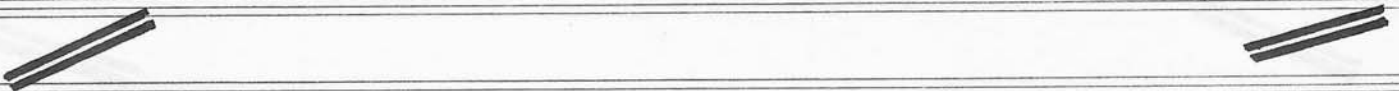
Handwritten musical score for the third system. It shows further development of the musical themes. Dynamics include *f* (forte) and *mf* (mezzo-forte).

Handwritten musical score for the fourth system. It concludes the piece with final chords and dynamics. Dynamics include *mp* (mezzo-piano), *f* (forte), and *mf* (mezzo-forte).

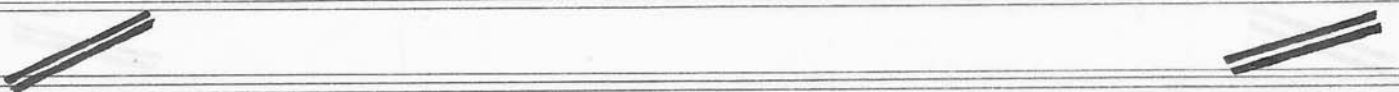
Copyright © Liana Alexandra  
 ISMN 000 72.96.94.37  
 000.72.96.95.35

-6-

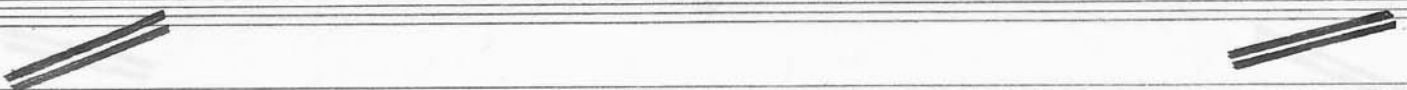
Handwritten musical score system 1. It consists of a grand staff with three staves. The top staff has a treble clef and contains a 7-measure rest, followed by a 3-measure rest, and then a series of chords and notes. The middle staff has a bass clef and contains a 7-measure rest, followed by a series of notes and chords. The bottom staff has a bass clef and contains a 7-measure rest, followed by a series of notes and chords. The system is marked with dynamics: *mf*, *p*, and *mp*. There are also some handwritten annotations like '7' and '3' above notes.



Handwritten musical score system 2. It consists of a grand staff with three staves. The top staff has a treble clef and contains a 5-measure rest, followed by a 3-measure rest, and then a series of chords and notes. The middle staff has a bass clef and contains a 5-measure rest, followed by a series of notes and chords. The bottom staff has a bass clef and contains a 6-measure rest, followed by a series of notes and chords. The system is marked with dynamics: *mf*, *f*, and *mp*. There are also some handwritten annotations like '5' and '6' above notes.



Handwritten musical score system 3. It consists of a grand staff with three staves. The top staff has a treble clef and contains a 7-measure rest, followed by a series of notes and chords. The middle staff has a bass clef and contains a 7-measure rest, followed by a series of notes and chords. The bottom staff has a bass clef and contains a 7-measure rest, followed by a series of notes and chords. The system is marked with dynamics: *mf*, *f*, and *mp*. There are also some handwritten annotations like '7' and '8' above notes.



Handwritten musical score system 4. It consists of a grand staff with three staves. The top staff has a treble clef and contains a 3-measure rest, followed by a series of notes and chords. The middle staff has a bass clef and contains a 3-measure rest, followed by a series of notes and chords. The bottom staff has a bass clef and contains a 3-measure rest, followed by a series of notes and chords. The system is marked with dynamics: *f*, *mf*, and *mp*. There are also some handwritten annotations like '3' and '6' above notes.



Handwritten musical score for the first system, measures 1-4. The music is written on three staves. The first staff has a treble clef and a key signature of one sharp (F#). It begins with a quarter rest, followed by a quarter note F#, a quarter note G, and a quarter note A, all beamed together with a '3' above them. This is followed by a quarter note B, a quarter note C, and a quarter note D, also beamed together. The second staff has a bass clef and a key signature of one sharp. It begins with a quarter rest, followed by a quarter note F#, a quarter note G, and a quarter note A, all beamed together. The third staff has a bass clef and a key signature of one sharp. It begins with a quarter rest, followed by a quarter note F#, a quarter note G, and a quarter note A, all beamed together. The system ends with a double bar line. Dynamics include *mp* (mezzo-piano) and *mf* (mezzo-forte).

Handwritten musical score for the second system, measures 5-8. The music is written on two staves. The first staff has a treble clef and a key signature of one sharp. It begins with a quarter note F#, a quarter note G, a quarter note A, and a quarter note B, all beamed together with a '6' above them. This is followed by a quarter note C, a quarter note D, a quarter note E, and a quarter note F#, all beamed together with a '6' above them. The second staff has a bass clef and a key signature of one sharp. It begins with a quarter note F#, a quarter note G, a quarter note A, and a quarter note B, all beamed together. The system ends with a double bar line. Dynamics include *mp* (mezzo-piano).

Handwritten musical score for the third system, measures 9-12. The music is written on two staves. The first staff has a treble clef and a key signature of one sharp. It begins with a quarter note F#, a quarter note G, a quarter note A, and a quarter note B, all beamed together with a '6' above them. This is followed by a quarter note C, a quarter note D, a quarter note E, and a quarter note F#, all beamed together with a '6' above them. The second staff has a bass clef and a key signature of one sharp. It begins with a quarter note F#, a quarter note G, a quarter note A, and a quarter note B, all beamed together. The system ends with a double bar line. Dynamics include *mp* (mezzo-piano).

Handwritten musical score for the fourth system, measures 13-16. The music is written on two staves. The first staff has a treble clef and a key signature of one sharp. It begins with a quarter note F#, a quarter note G, a quarter note A, and a quarter note B, all beamed together with a '6' above them. This is followed by a quarter note C, a quarter note D, a quarter note E, and a quarter note F#, all beamed together with a '6' above them. The second staff has a bass clef and a key signature of one sharp. It begins with a quarter note F#, a quarter note G, a quarter note A, and a quarter note B, all beamed together. The system ends with a double bar line. Dynamics include *mf* (mezzo-forte).

Handwritten musical score for the fifth system, measures 17-20. The music is written on two staves. The first staff has a treble clef and a key signature of one sharp. It begins with a quarter note F#, a quarter note G, a quarter note A, and a quarter note B, all beamed together with a '6' above them. This is followed by a quarter note C, a quarter note D, a quarter note E, and a quarter note F#, all beamed together with a '6' above them. The second staff has a bass clef and a key signature of one sharp. It begins with a quarter note F#, a quarter note G, a quarter note A, and a quarter note B, all beamed together. The system ends with a double bar line. Dynamics include *f* (forte).



Handwritten musical notation for the first system. The treble staff contains a melodic line with sixteenth-note runs, marked with fingerings (6, 6, 6) and a repeat sign. The bass staff provides harmonic support with chords and a single note. A measure rest of 18 is indicated above the treble staff.

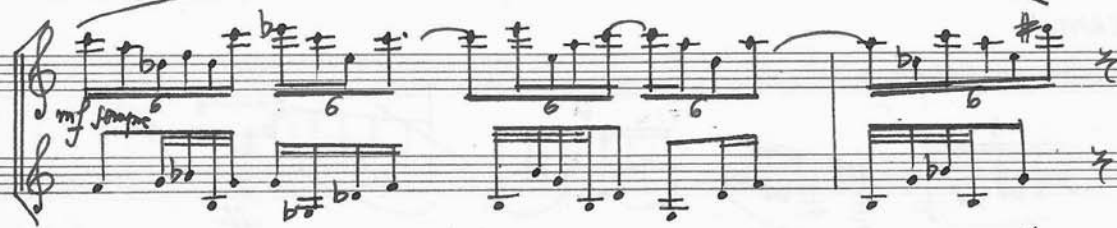
Handwritten musical notation for the second system. The treble staff continues the melodic line with sixteenth-note runs and fingerings (6, 6, 6). The bass staff includes a section marked 'mf' and a 'up' instruction. The system concludes with a grand staff section labeled 'G. P. 3''.

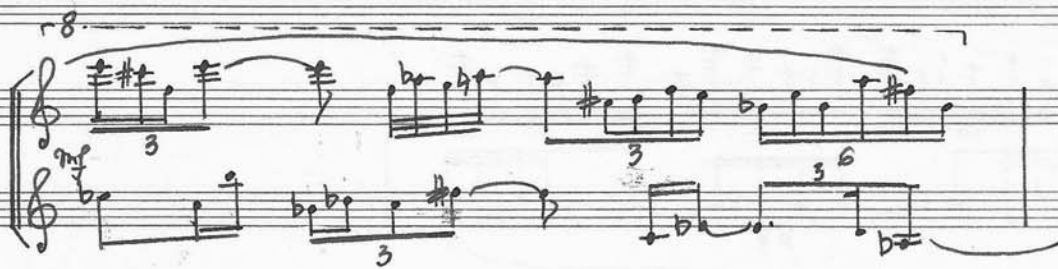
Handwritten musical notation for the third system. The treble staff begins with a measure rest of 18, followed by melodic fragments and sixteenth-note runs. The bass staff contains a few notes and rests.

Handwritten musical notation for the fourth system. The treble staff features a melodic line with sixteenth-note runs and fingerings (6, 6, 6). The bass staff includes a triplet of eighth notes. The system is marked with 'f sempre'.

Handwritten musical notation for the fifth system. The treble staff contains a melodic line with sixteenth-note runs and fingerings (3, 6). The bass staff provides harmonic support. The system is marked with 'f sempre'.

-9-





CADENZA - MODERATO

*Poco rubato molto cantabile*





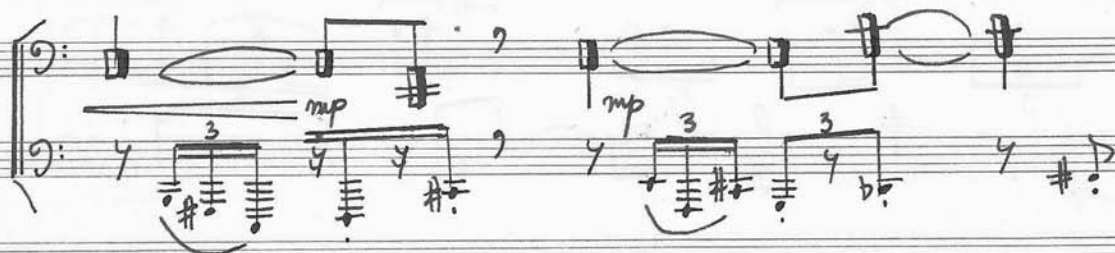
a tempo (Moderato)

dolce lento

poco a poco accel.

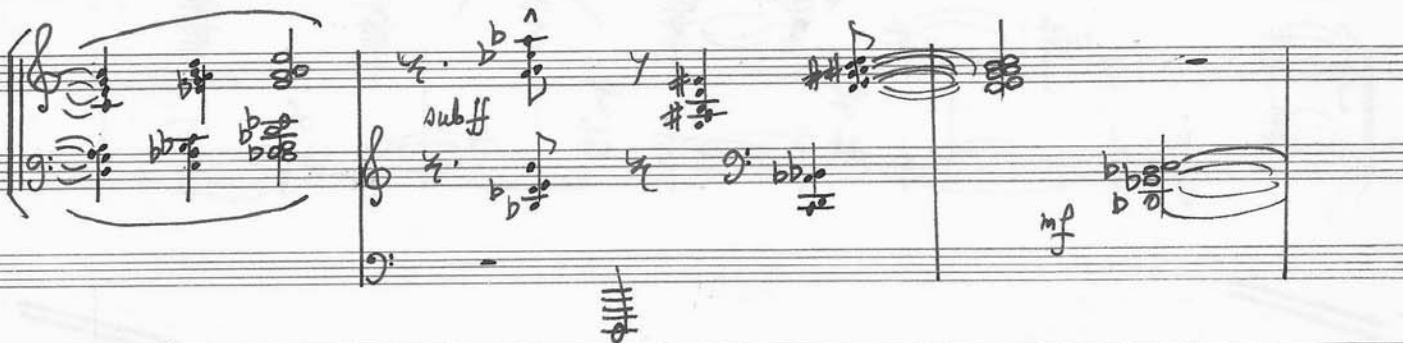
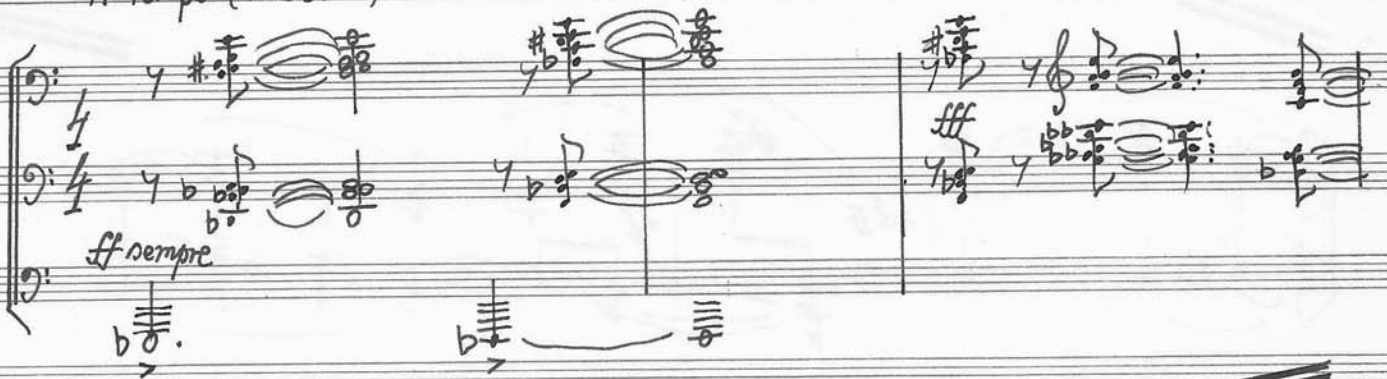
Allegro







A Tempo (♩ ≈ 66 MM)



Handwritten musical score for the first system, measures 1-2. The music is written in treble and bass staves. Measure 1 contains a complex chordal texture with many notes. Measure 2 features a sustained chord in the bass and a melodic line in the treble. The dynamic marking *sub p dolce* is written above the treble staff in measure 2.

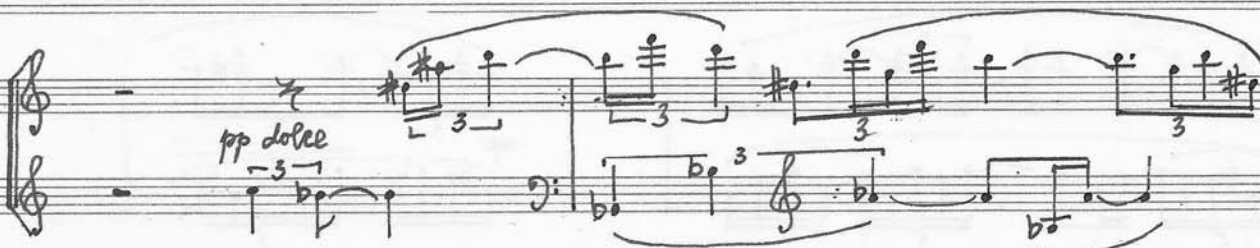
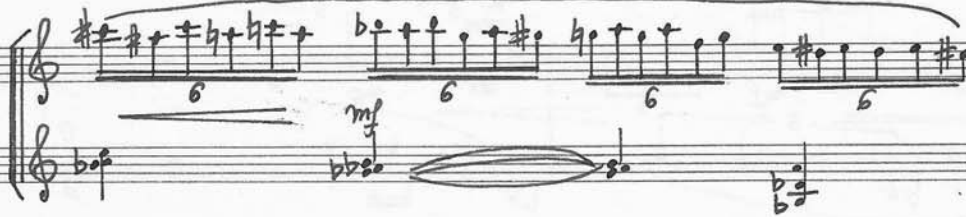
Handwritten musical score for the second system, measures 3-4. Measure 3 continues the texture from the previous system. Measure 4 features a melodic line in the treble and a sustained chord in the bass. The dynamic marking *sub ff* is written above the treble staff in measure 3, and *mf* is written above the treble staff in measure 4.

Handwritten musical score for the third system, measures 5-6. Measure 5 features a complex chordal texture. Measure 6 features a melodic line in the treble and a sustained chord in the bass. The dynamic marking *f* is written above the treble staff in measure 5, and *f* is written above the treble staff in measure 6.

Handwritten musical score for the fourth system, measures 7-8. Measure 7 features a complex chordal texture. Measure 8 features a melodic line in the treble and a sustained chord in the bass. The dynamic marking *G. P.* is written above the treble staff in measure 7, and *mp* is written above the treble staff in measure 8.

Handwritten musical score for the fifth system, measures 9-10. Measure 9 features a complex chordal texture. Measure 10 features a melodic line in the treble and a sustained chord in the bass. The dynamic marking *mp* is written above the treble staff in measure 9, and *mf* is written above the treble staff in measure 10.







Handwritten musical notation for the first system, measures 1-4. The music is in 3/4 time. The first staff (treble clef) contains a melody with triplets and slurs. The second staff (bass clef) provides a harmonic accompaniment with triplets. Dynamics include *mp* (mezzo-piano) and *mf* (mezzo-forte).

Handwritten musical notation for the second system, measures 5-8. The first staff continues the melody with sixteenth-note runs. The second staff features a bass line with sustained notes and chords. Dynamics include *mp*, *pp* (pianissimo), and *mf*.

Handwritten musical notation for the third system, measures 9-12. The first staff continues the sixteenth-note melodic pattern. The second staff has a bass line with sustained notes. Dynamics include *mp* and *pp*.

Handwritten musical notation for the fourth system, measures 13-16. The first staff continues the sixteenth-note melodic pattern. The second staff has a bass line with sustained notes. Dynamics include *mp* and *pp*. The system concludes with a key signature change to D major, indicated by two sharps.

Handwritten musical notation for the fifth system, measures 17-20. The first staff continues the sixteenth-note melodic pattern. The second staff has a bass line with sustained notes. Dynamics include *mp* and *pp*. The system concludes with a key signature change to D major, indicated by two sharps.

-17-

Handwritten musical notation for measures 17-18. The notation is in bass clef with a key signature of one sharp (F#). It features two staves. The upper staff contains eighth notes and triplets, with dynamics markings 'mf' and 'mp'. The lower staff contains chords and eighth notes, with a '5' marking below it. The measures are separated by a double bar line.

Handwritten musical notation for measures 19-20. The notation is in bass clef with a key signature of one sharp (F#). It features two staves. The upper staff contains eighth notes with a '6' marking above them, and a 'mp sempre' marking. The lower staff contains chords, with a 'b' marking below it. The measures are separated by a double bar line.

Handwritten musical notation for measures 21-22. The notation is in bass clef with a key signature of one sharp (F#). It features two staves. The upper staff contains eighth notes with a '6' marking above them. The lower staff contains chords, with a 'b' marking below it. The measures are separated by a double bar line.

Handwritten musical notation for measures 23-24. The notation is in bass clef with a key signature of one sharp (F#). It features two staves. The upper staff contains eighth notes with a '6' marking above them. The lower staff contains chords, with a 'b' marking below it. The measures are separated by a double bar line.

Handwritten musical notation for measures 25-26. The notation is in bass clef with a key signature of one sharp (F#). It features two staves. The upper staff contains eighth notes with a '6' marking above them. The lower staff contains chords, with a 'b' marking below it. The measures are separated by a double bar line.

-18-

Copyright © Liana Alexandra  
ISMN 000.72.96.94.37  
000.72.96.95.35

Handwritten musical notation for a piano piece, measures 17-18. The left hand plays a sixteenth-note scale in the bass clef. The right hand has a whole note chord in measure 17 and a half note chord in measure 18. Dynamics include mp and pp.

CADENZA

Handwritten musical notation for a piano cadenza, measures 19-20. The left hand has a melodic line with slurs and a sustained bass line. The right hand has a melodic line with slurs. Dynamics include mp sempre, pp, and ped.

Handwritten musical notation for a piano piece, measures 21-22. The left hand has a melodic line with slurs and a sustained bass line. The right hand has a melodic line with slurs. Dynamics include mp sempre, pp, and ped.

Presto

Handwritten musical notation for a piano piece, measures 23-24. The left hand has a melodic line with slurs and a sustained bass line. The right hand has a melodic line with slurs. Dynamics include mp sempre, pp, and ped.



8- - - - -

**ff** *l.v.*

**ff** *l.v.*

**ff**

ped. \_\_\_\_\_

*RUBATO*

*ACCELL...*

*rall...*

*Allegro*

*Allegro*

*Allegro*



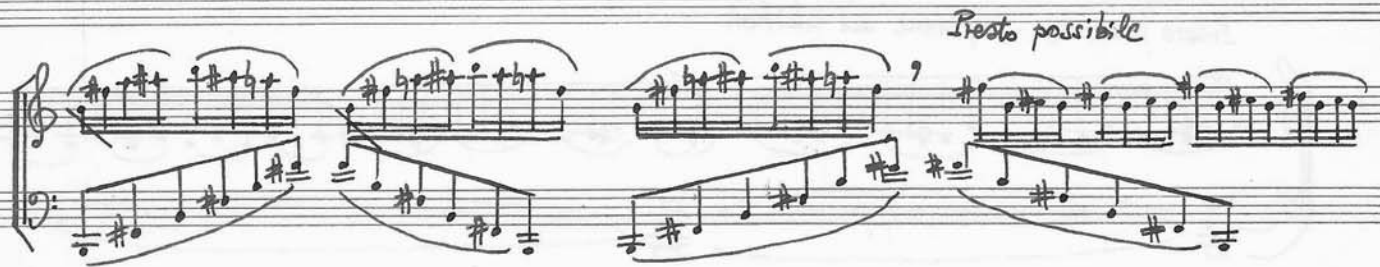
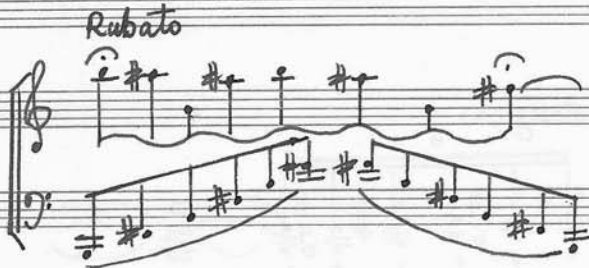
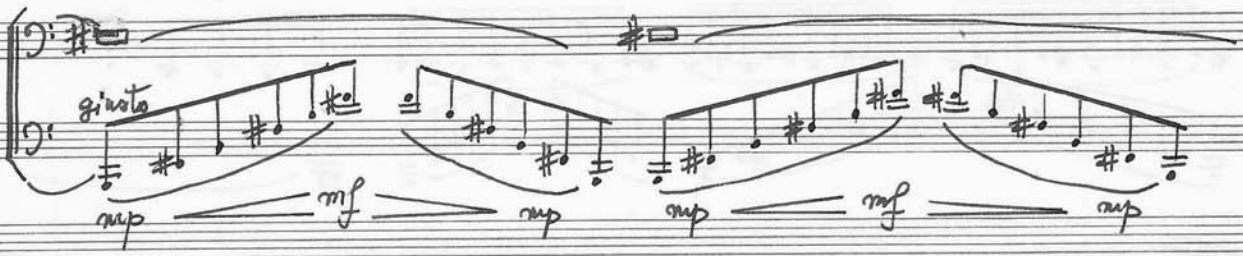
Handwritten musical score for piano and violin. The piano part features a series of sixteenth notes in the right hand and a bass line in the left hand. The violin part has a melodic line with a fermata. The tempo is marked *Moderato* (♩ ≈ 66 MM).

Handwritten musical score for piano and violin. The piano part continues with a series of sixteenth notes. The violin part has a melodic line with a fermata. The tempo is marked *Tempo giusto* (♩ ≈ 60 MM).

Handwritten musical score for piano and violin. The piano part features a series of sixteenth notes. The violin part has a melodic line with a fermata. The tempo is marked *Tempo giusto*.

Handwritten musical score for piano and violin. The piano part features a series of sixteenth notes. The violin part has a melodic line with a fermata. The tempo is marked *Allegro* and *(molto rubato) (Moderato)*.

Handwritten musical score for piano and violin. The piano part features a series of sixteenth notes. The violin part has a melodic line with a fermata. The tempo is marked *Allegro*.



Rall molto

Energico

6

Presto possibile - ripetere ad libitum

Rall...

Molto rubato e molto calmo



-23-

\_\_\_\_\_

Handwritten musical score for "L'Espresso" by Umberto Eco. The score is written on three staves. The top staff is for a vocal line, starting with a treble clef and a key signature of one sharp (F#). It contains a melodic line with notes and rests, and a "mp" (mezzo-piano) dynamic marking. The middle staff is for a piano accompaniment, starting with a treble clef and a key signature of one sharp. It contains a series of chords and rests, with a "mp sempre" (mezzo-piano, always) marking. The bottom staff is for a piano accompaniment, starting with a bass clef and a key signature of one sharp. It contains a series of chords and rests, with a "mp sempre" marking. The score is handwritten and includes a copyright notice at the bottom: "Copyright © Iana Alexandra".



Handwritten musical notation for a piano piece, measures 23-24. The notation is in treble and bass staves. Measure 23 has a treble staff with notes G4, A4, Bb4, C5 and a bass staff with notes Bb2, C3, D3, E3. Measure 24 has a treble staff with notes G4, A4, Bb4, C5 and a bass staff with notes Bb2, C3, D3, E3. There are slurs over the treble staves in measures 23 and 24, and a slur over the bass staff in measure 24. The dynamics are mp and mf.

mp

mf

Handwritten musical notation for a piano piece, measures 25-26. The notation is in treble and bass staves. Measure 25 has a treble staff with notes G4, A4, Bb4, C5 and a bass staff with notes Bb2, C3, D3, E3. Measure 26 has a treble staff with notes G4, A4, Bb4, C5 and a bass staff with notes Bb2, C3, D3, E3. There are slurs over the treble staves in measures 25 and 26, and a slur over the bass staff in measure 26. The dynamics are mp and mf.

Handwritten musical notation for a piano piece, measures 27-28. The notation is in treble and bass staves. Measure 27 has a treble staff with notes G4, A4, Bb4, C5 and a bass staff with notes Bb2, C3, D3, E3. Measure 28 has a treble staff with notes G4, A4, Bb4, C5 and a bass staff with notes Bb2, C3, D3, E3. There are slurs over the treble staves in measures 27 and 28, and a slur over the bass staff in measure 28. The dynamics are mp and mf.

Rall...

mf

mp

f. v. al niente